

# New Zealand's Clinical Landscape: An Introduction

Chris Bullen, Clinical Trials Research Unit



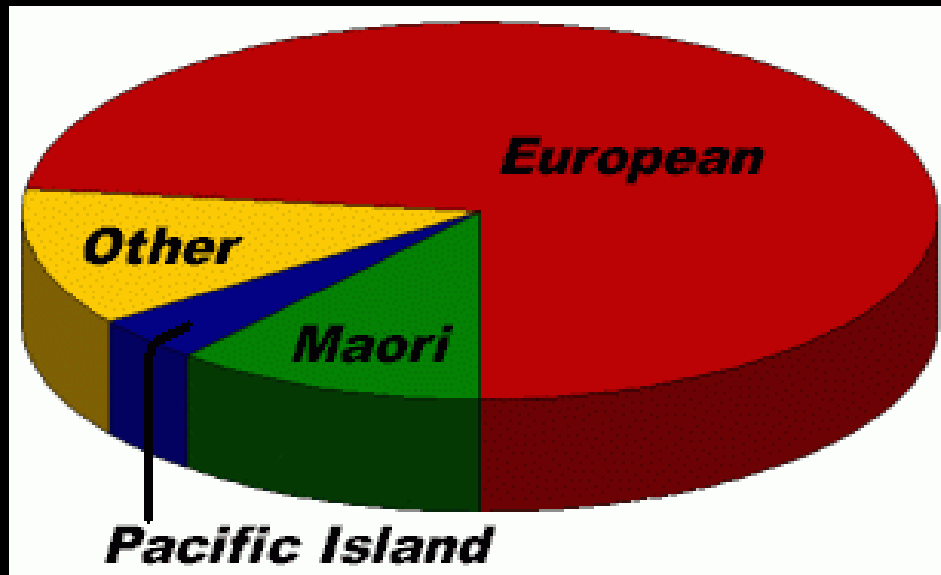




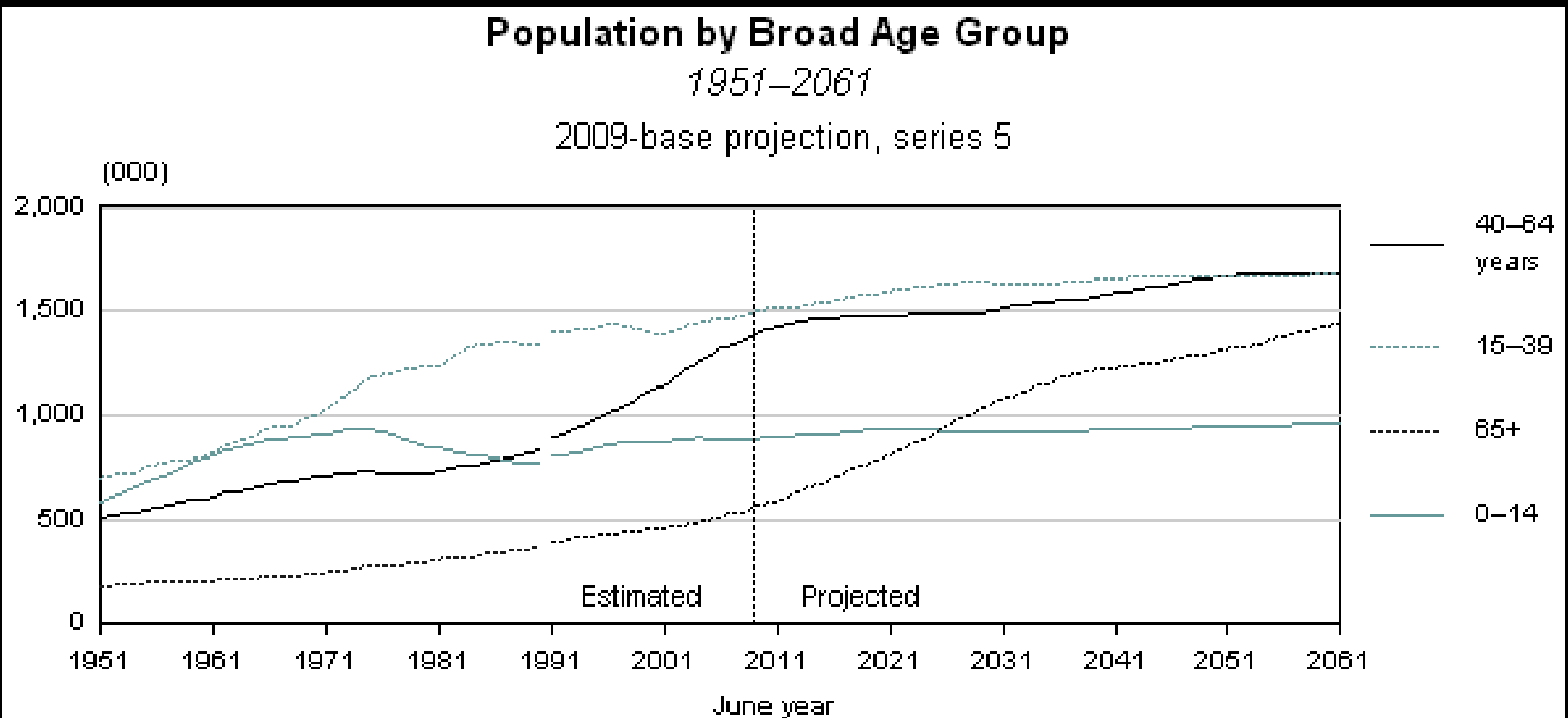
# Outline

- Our people
- Our health
- The healthcare landscape
- The clinical trials landscape



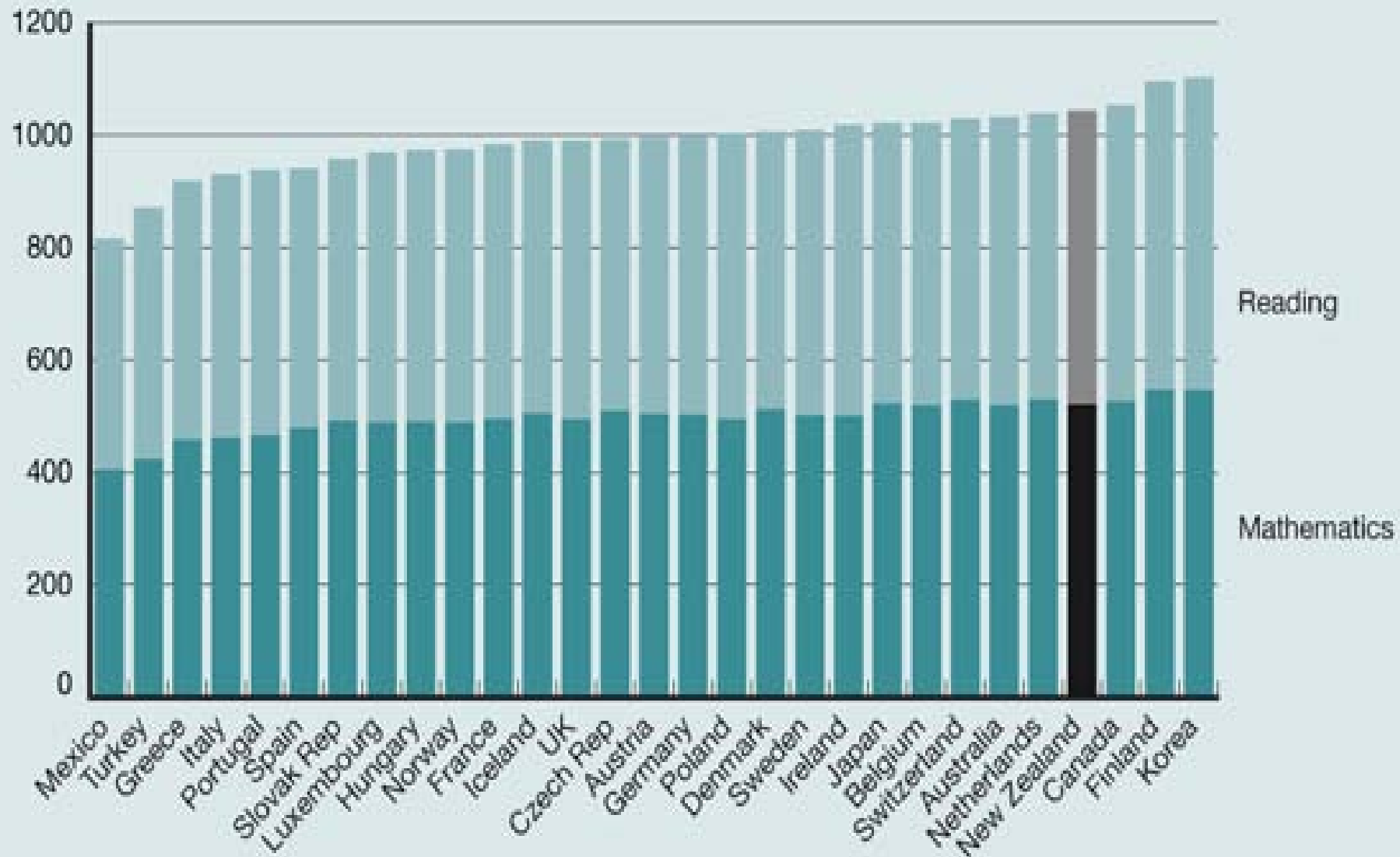


# Population growth projections, by age group

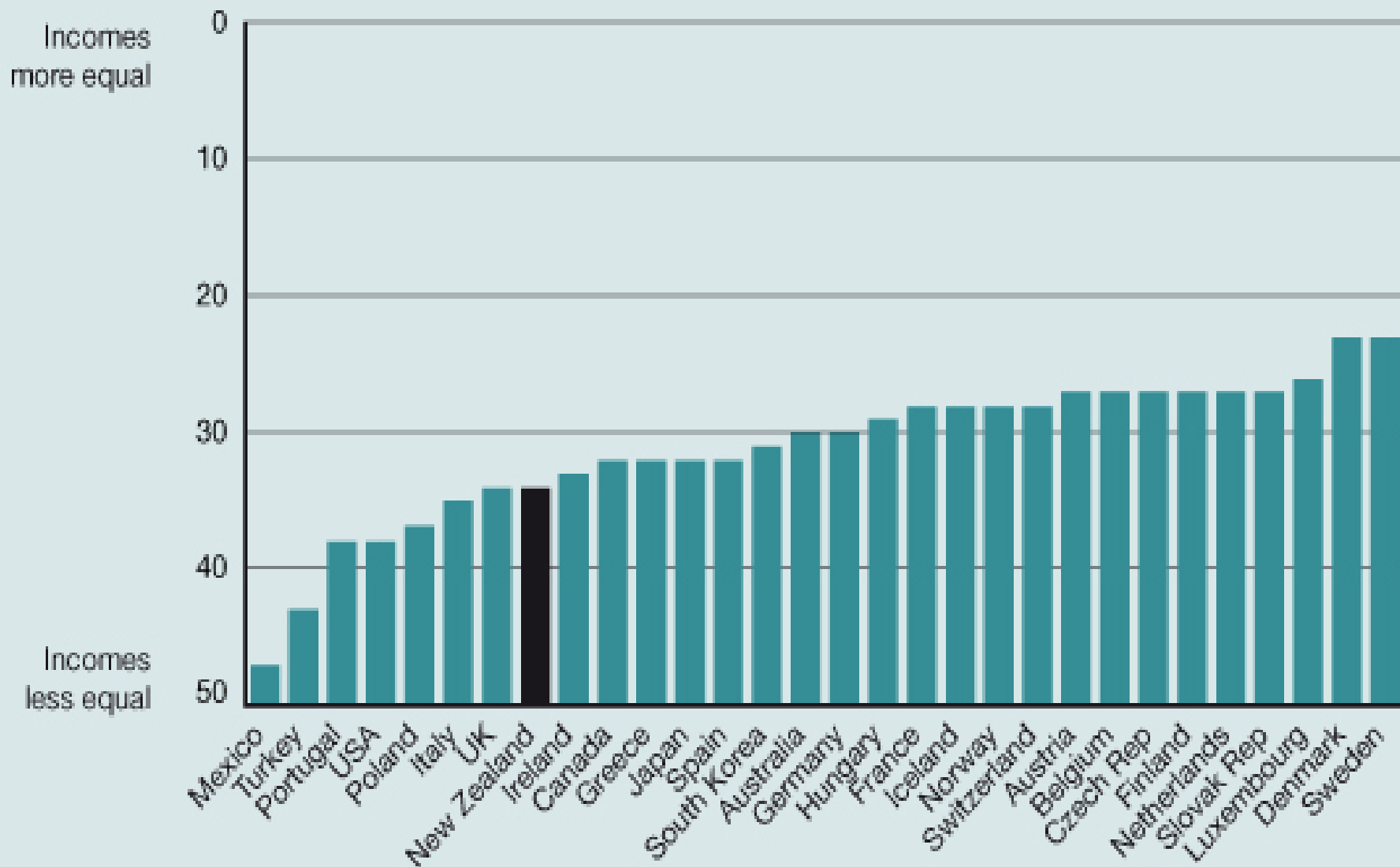


**Note:** The break in series between 1990 and 1991 denotes a change from the de facto population concept to the resident population concept.

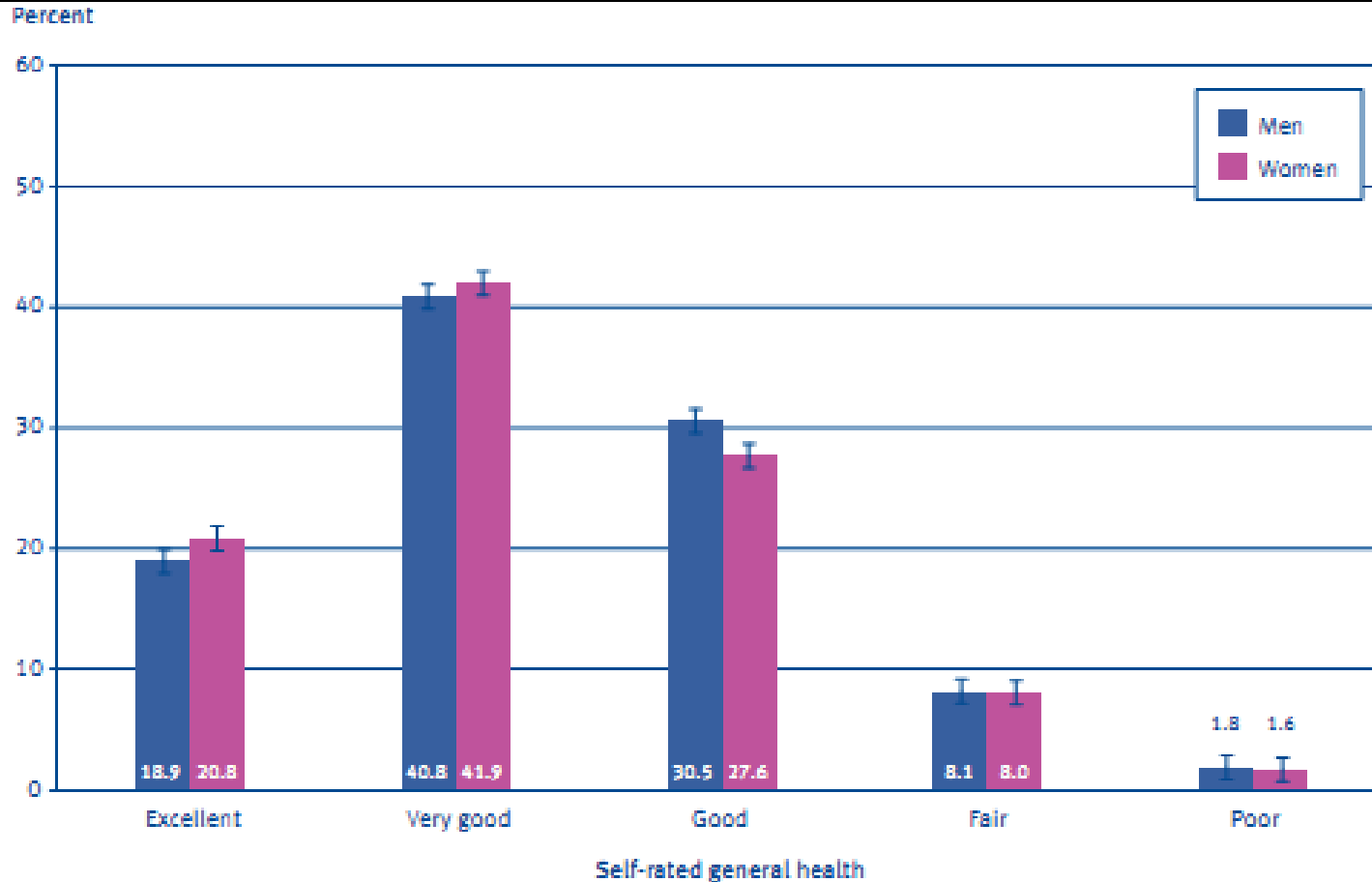
# PISA SCORES FOR READING AND MATHEMATICS, 2006



## GINI VALUE BEFORE HOUSING COST IN THE MID-2000s



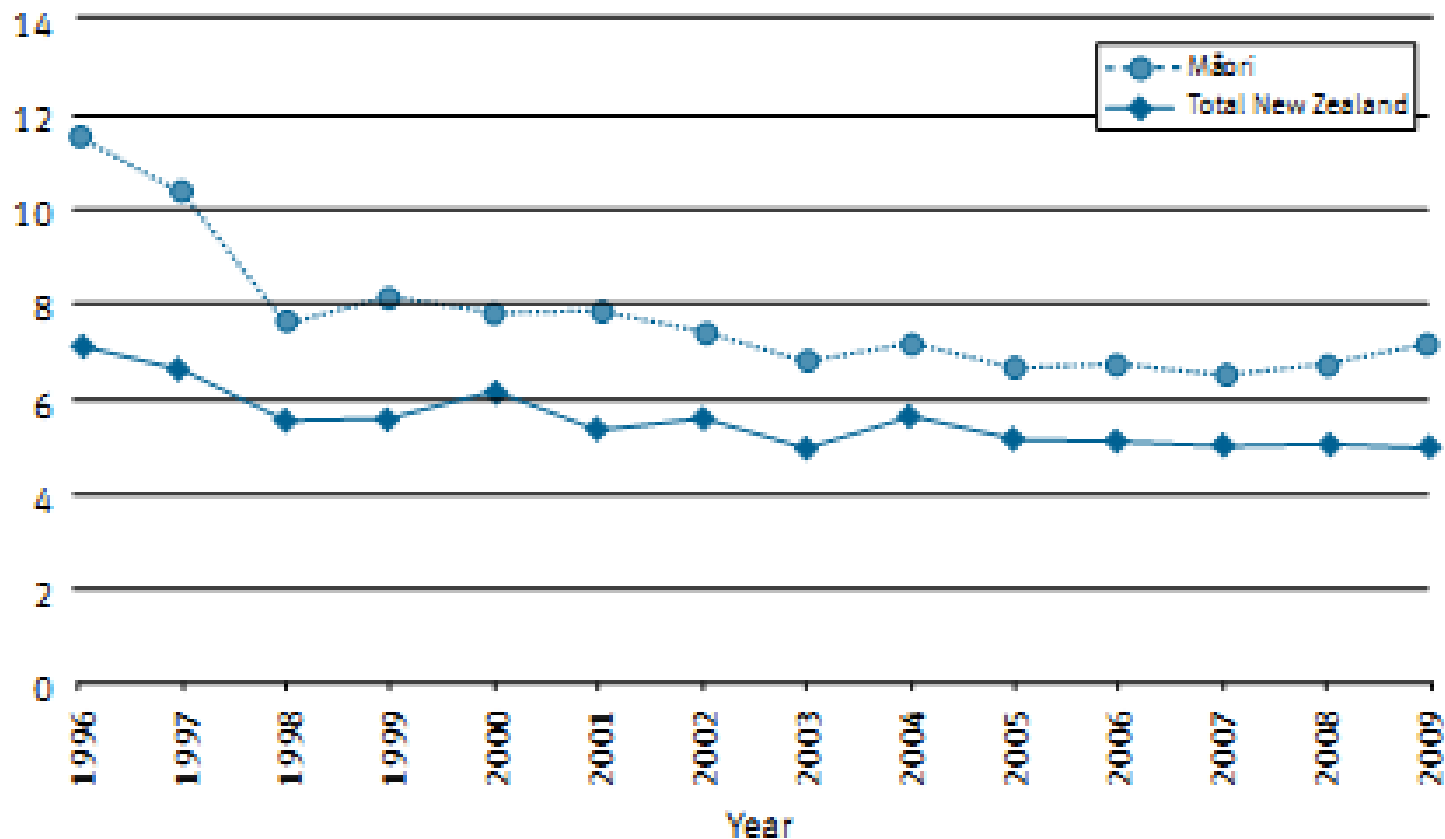
# Self-rated health



Source: 2006/07 New Zealand Health Survey

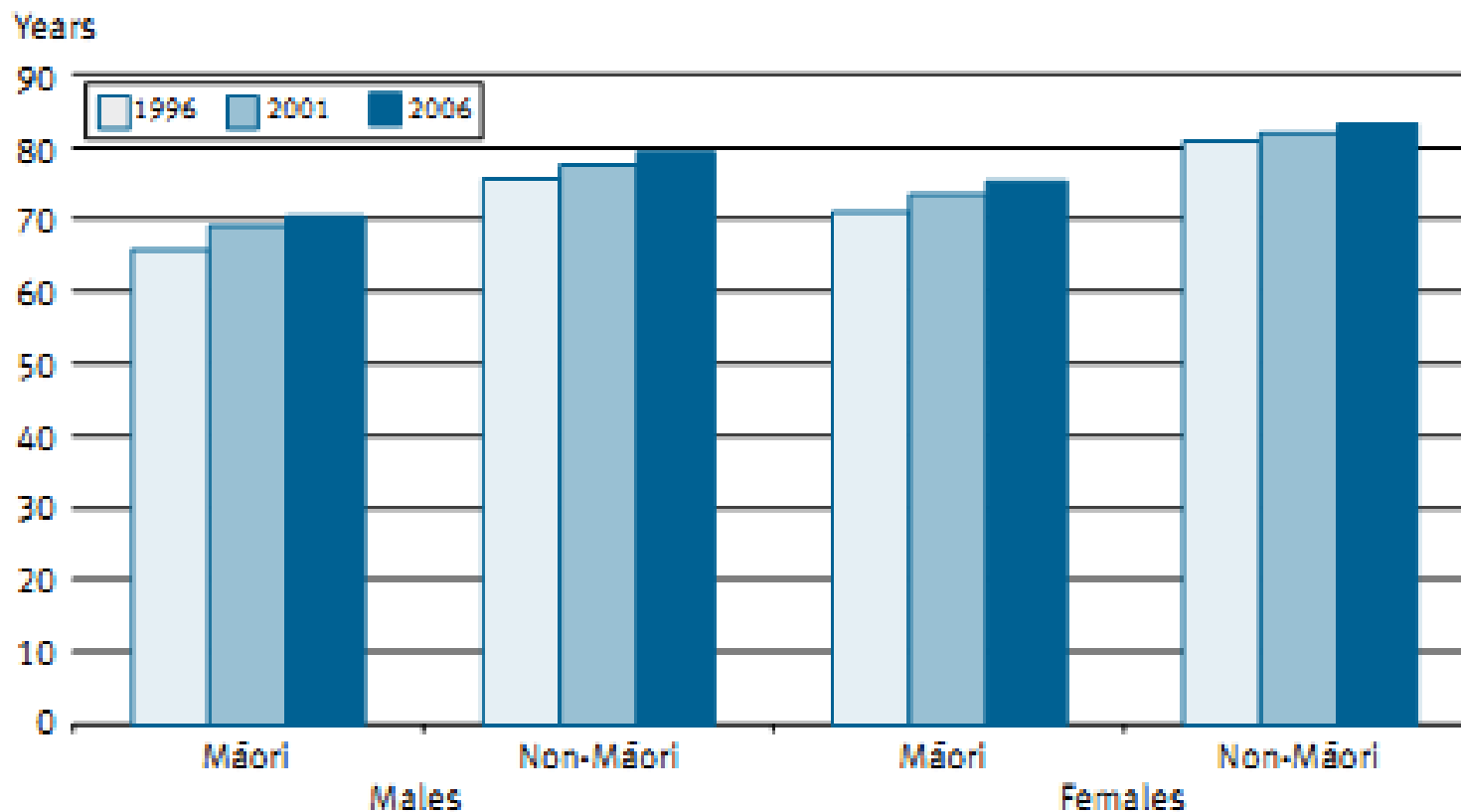
# Infant mortality 1996-2006

Rate per 1000 live births



Source: Statistics New Zealand Life Tables, 2010

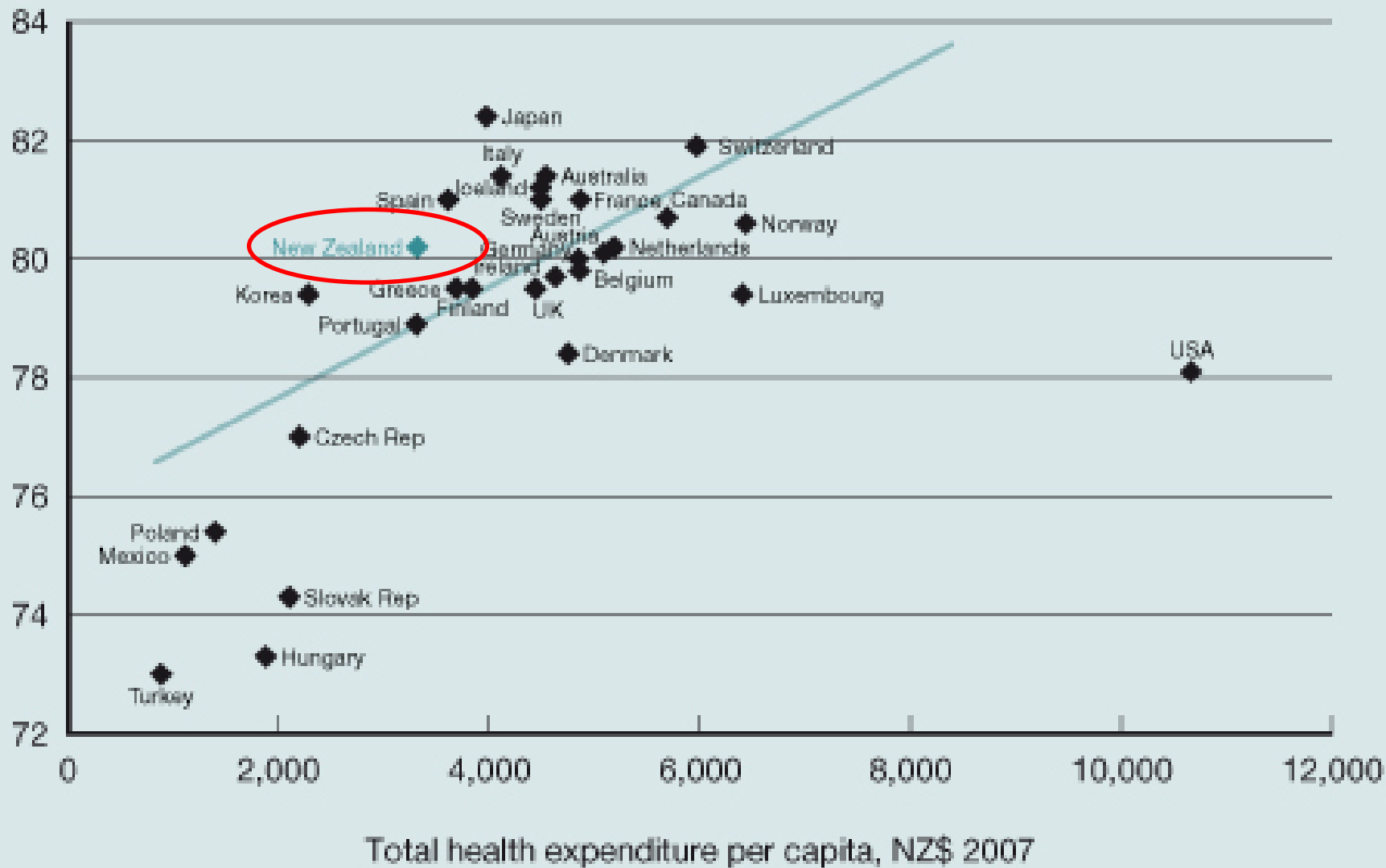
# Life expectancy at birth 1996-2006



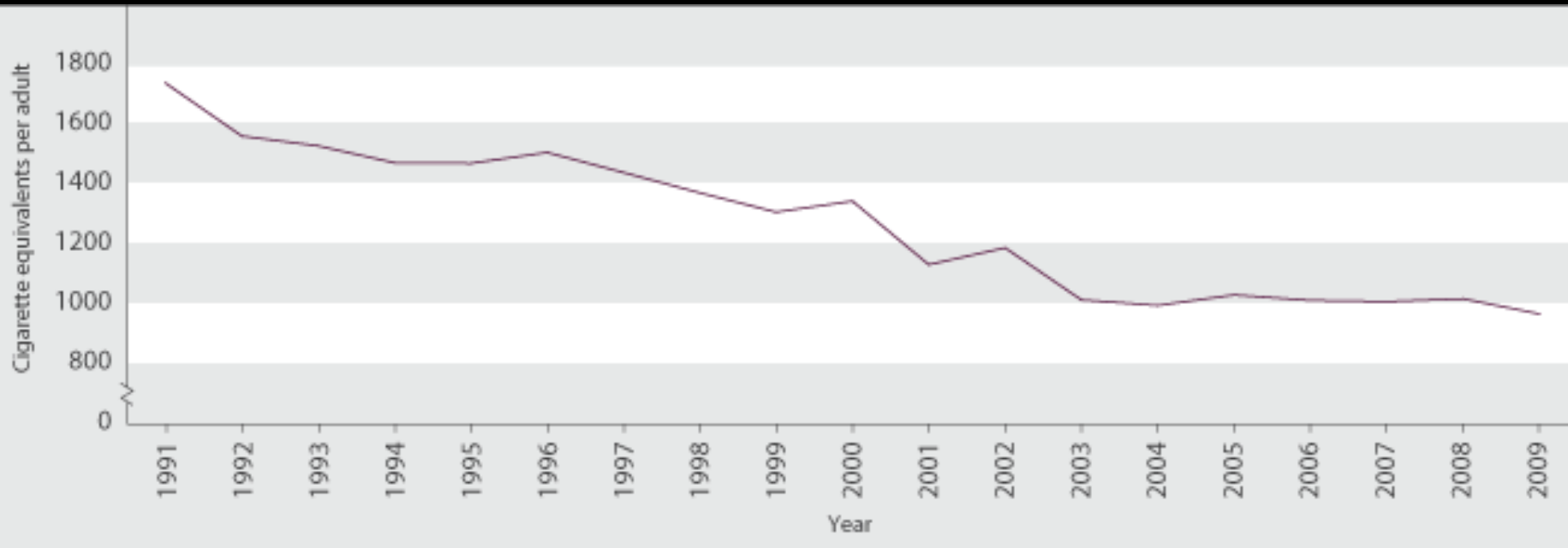
Source: Statistics New Zealand data

Note: Mortality data has been corrected by the Ministry of Health for ethnic undercount.

# HEALTH EXPENDITURE AND LIFE EXPECTANCY, 2007



# Tobacco consumption 1991-2009

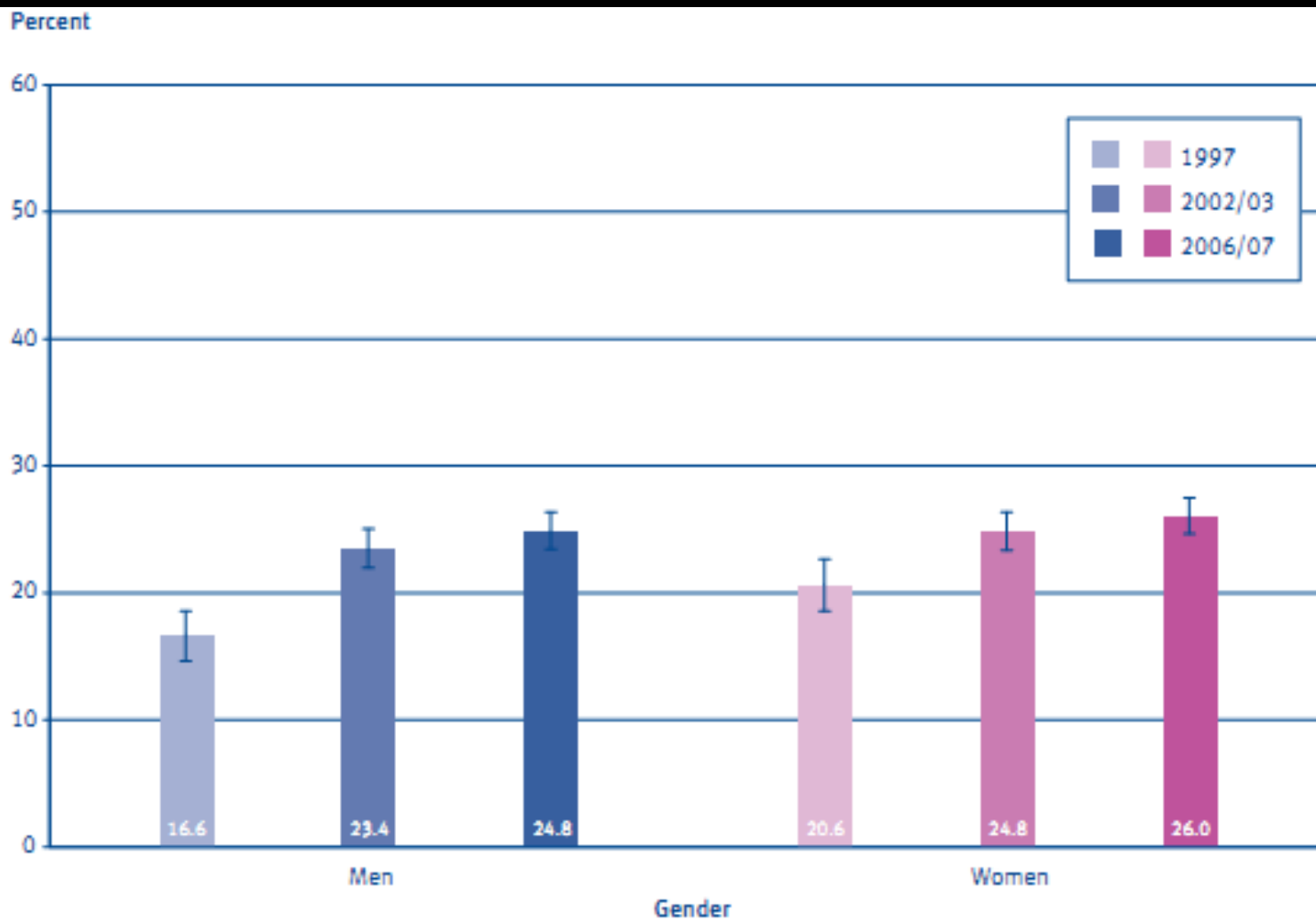


# Tobacco Smoking Prevalence

Ethnic group	Prevalence (95% CI)	Number of adults
European/ Other	18.6 (17.5–19.7)	475100
Māori	42.2 (40.0–44.4)	150000
Pacific	26.9 (23.6–30.2)	44300
Asian	11.2 (8.9–13.4)	31200

Source: 2006/07 New Zealand Health Survey

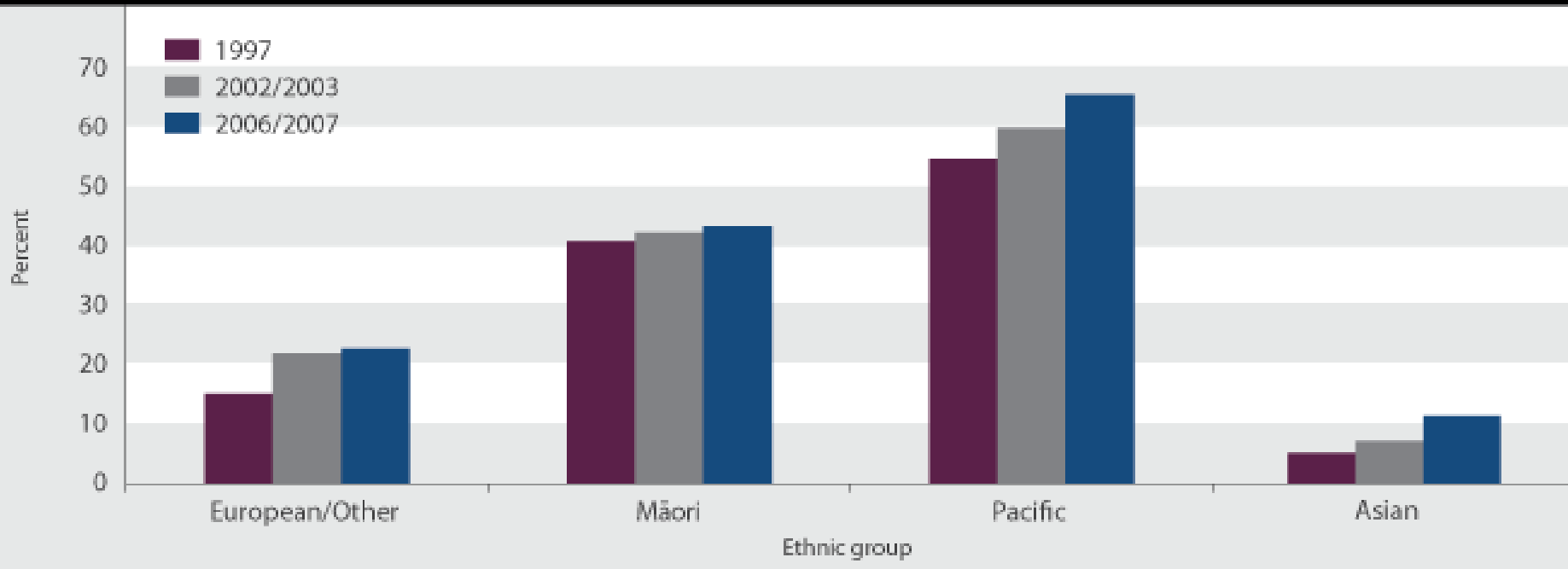
# Obesity Trends 1997-2007, by sex



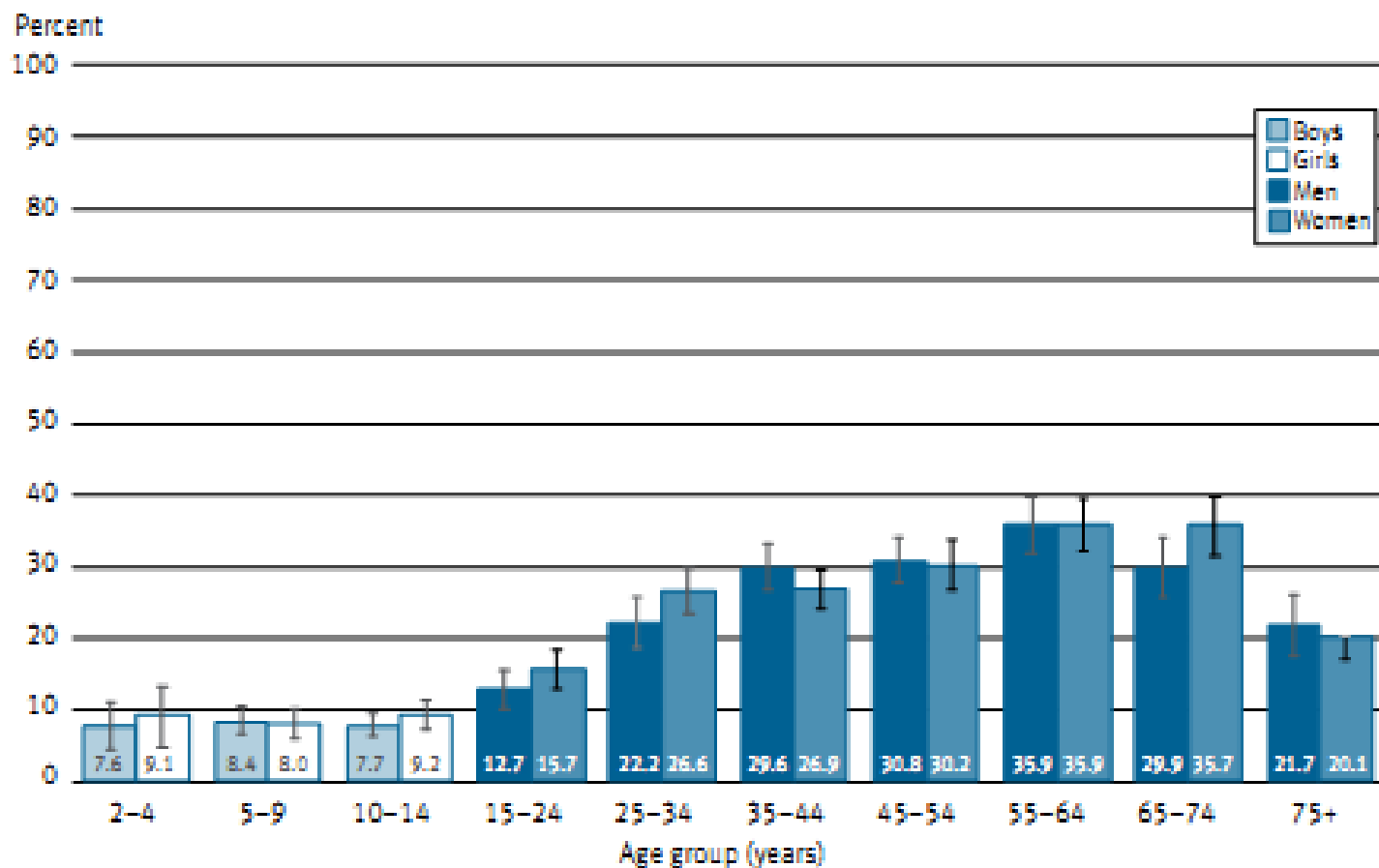
Source: 2002/03 and 2006/07 New Zealand Health Surveys, 1997 National Nutrition Survey

Note: Data from previous years have been reanalysed to allow for comparability.

# Obesity trends 1997-2007, by ethnicity

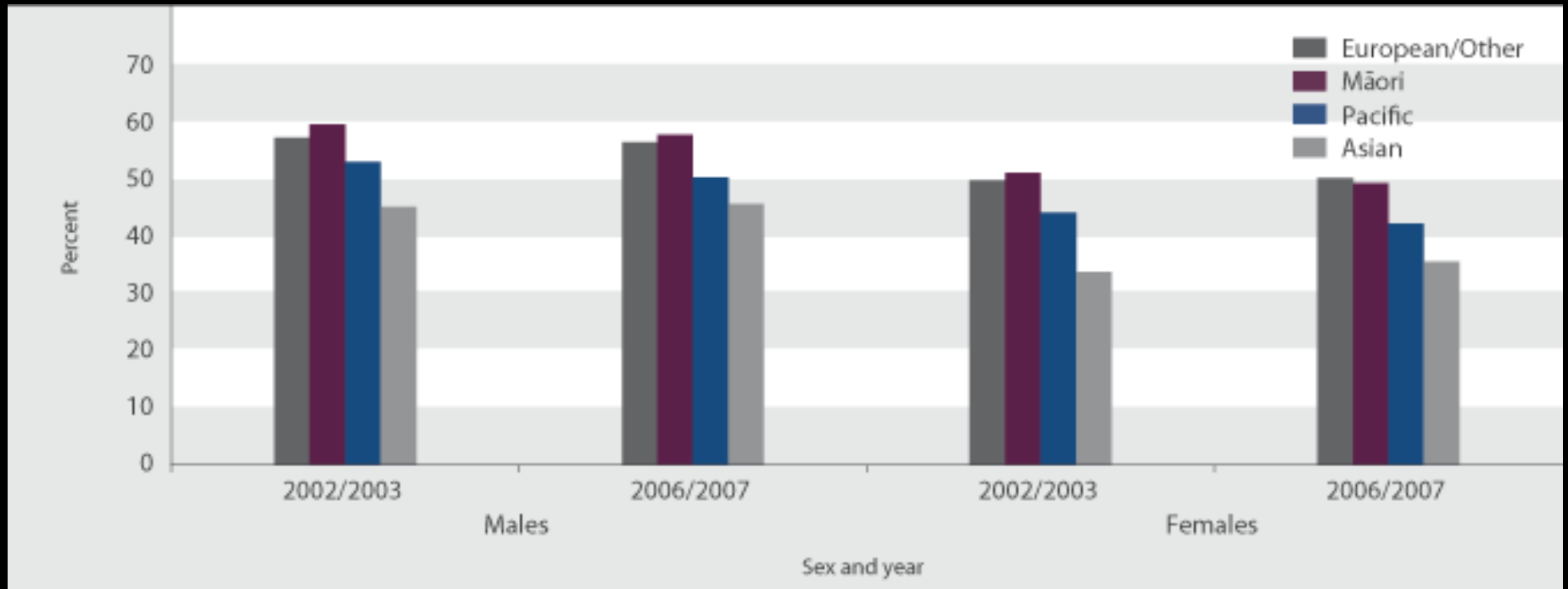


# Obesity, by age group

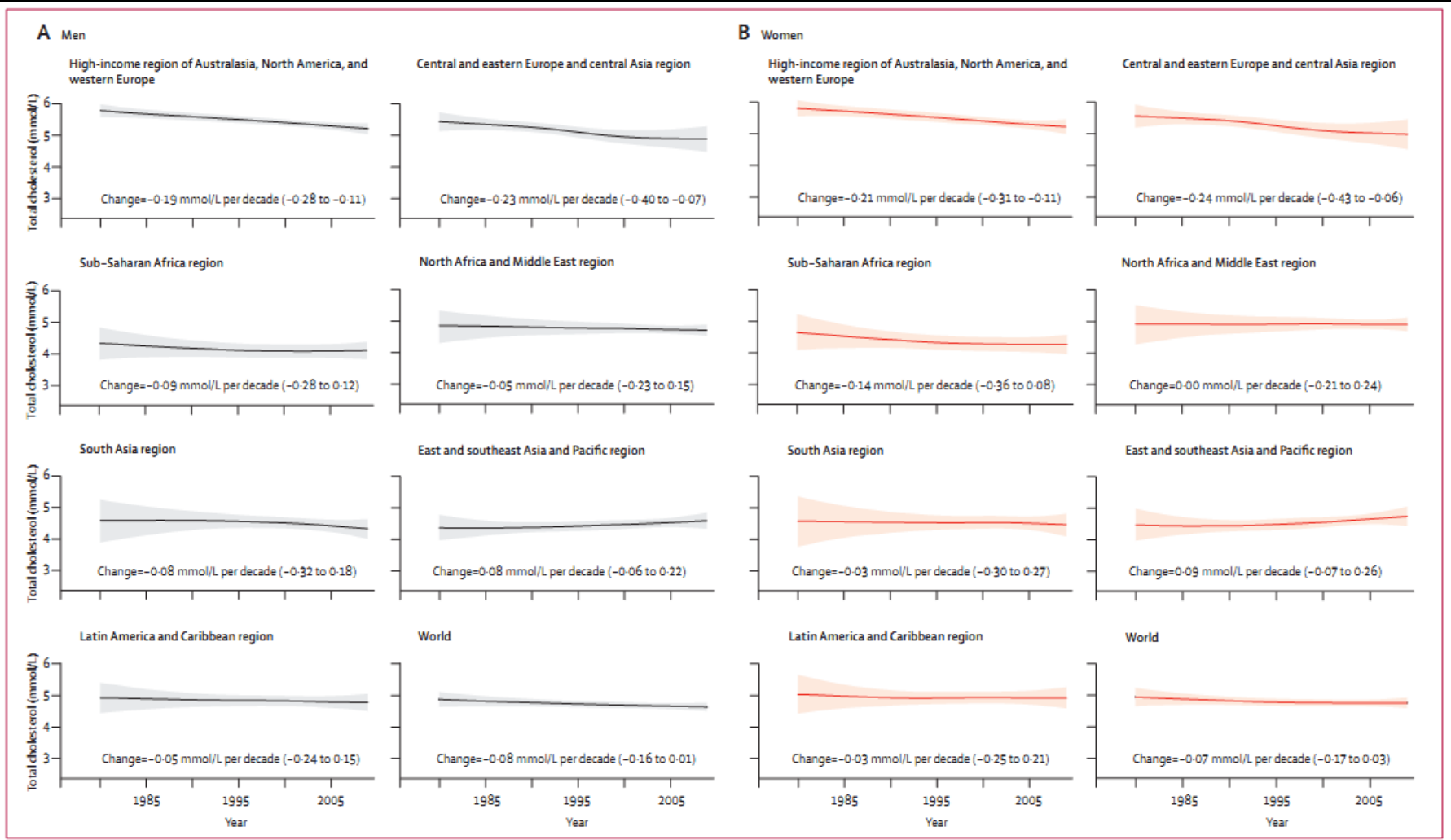


Source: 2006/07 New Zealand Health Survey

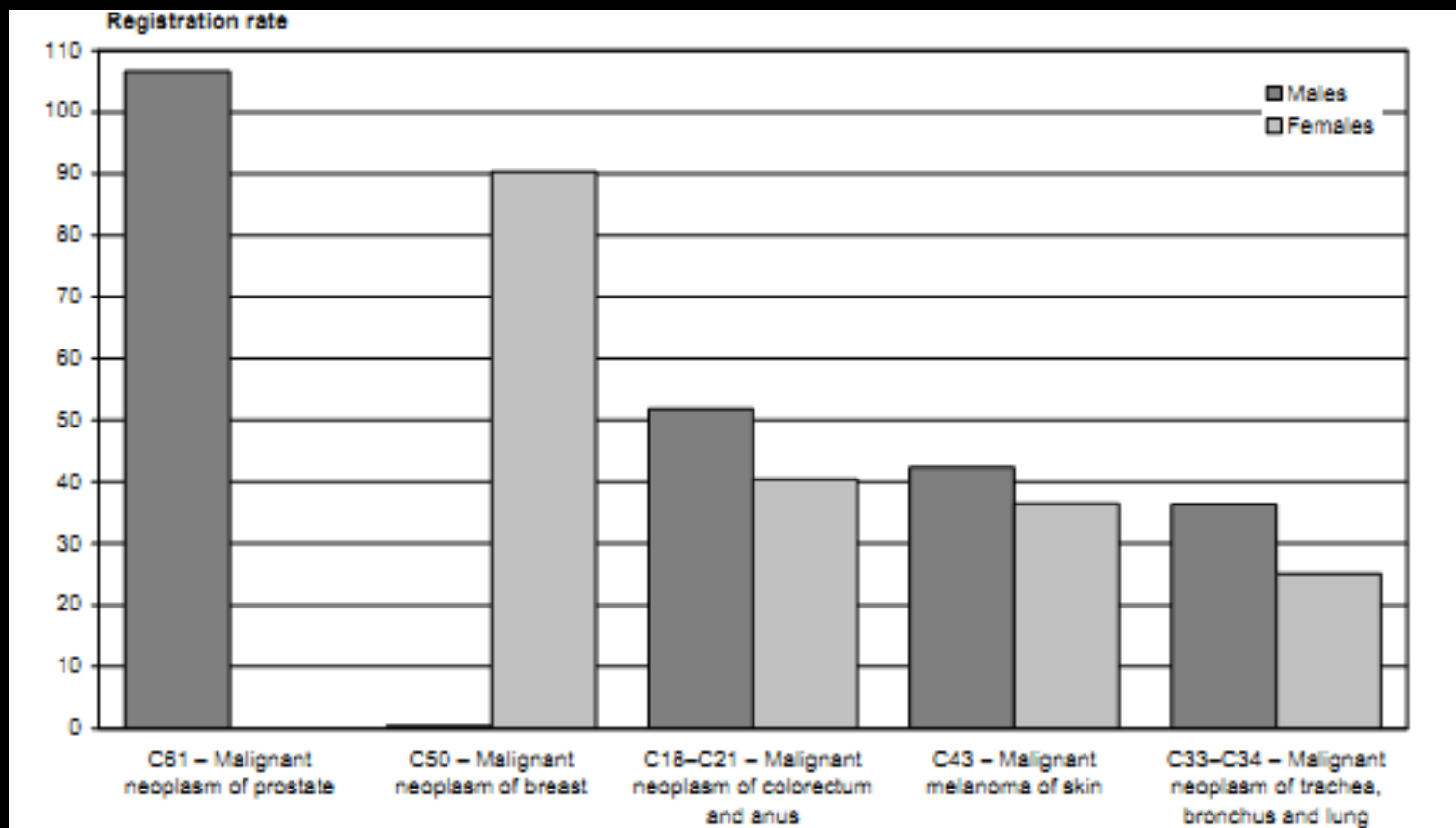
# Physical Activity, by ethnicity



# Global cholesterol trends



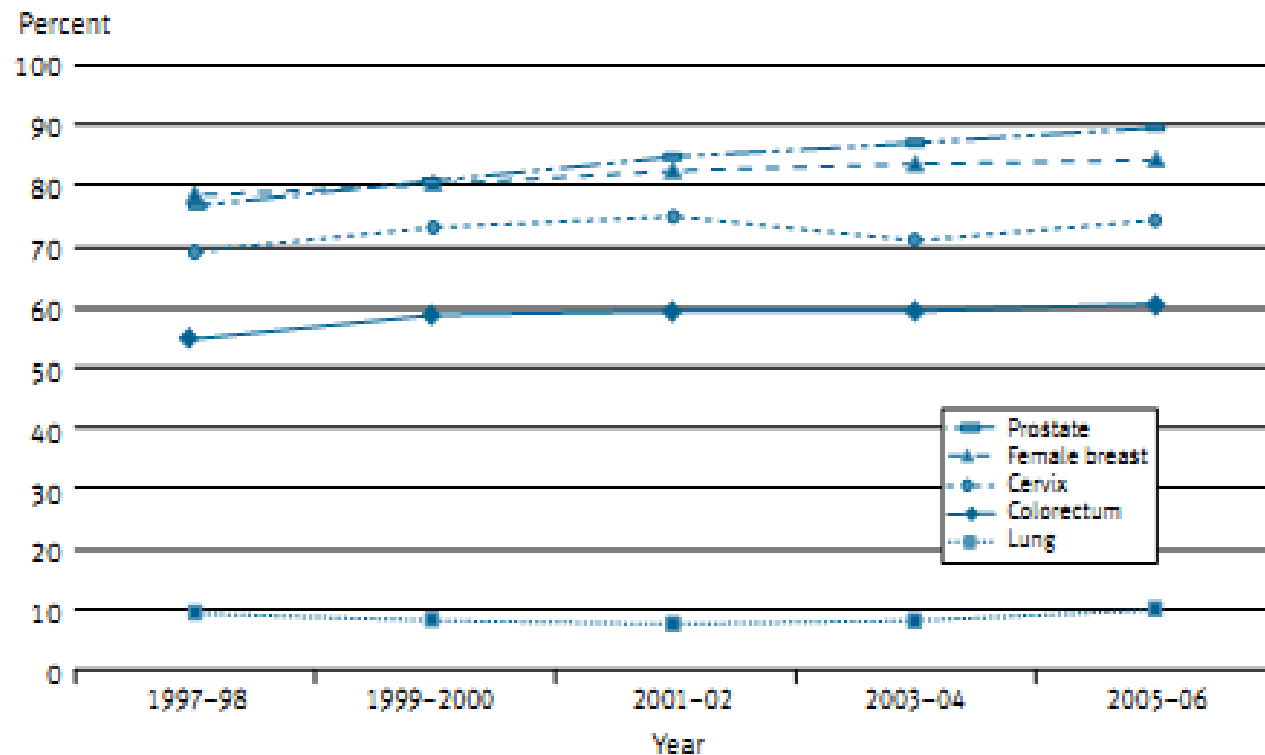
# Registration rates for leading cancer sites, by sex, 2007



Source: New Zealand Cancer Registry

Note: The rate shown is the age-standardised rate per 100,000 population, standardised to the World Health Organization (WHO) standard world population.

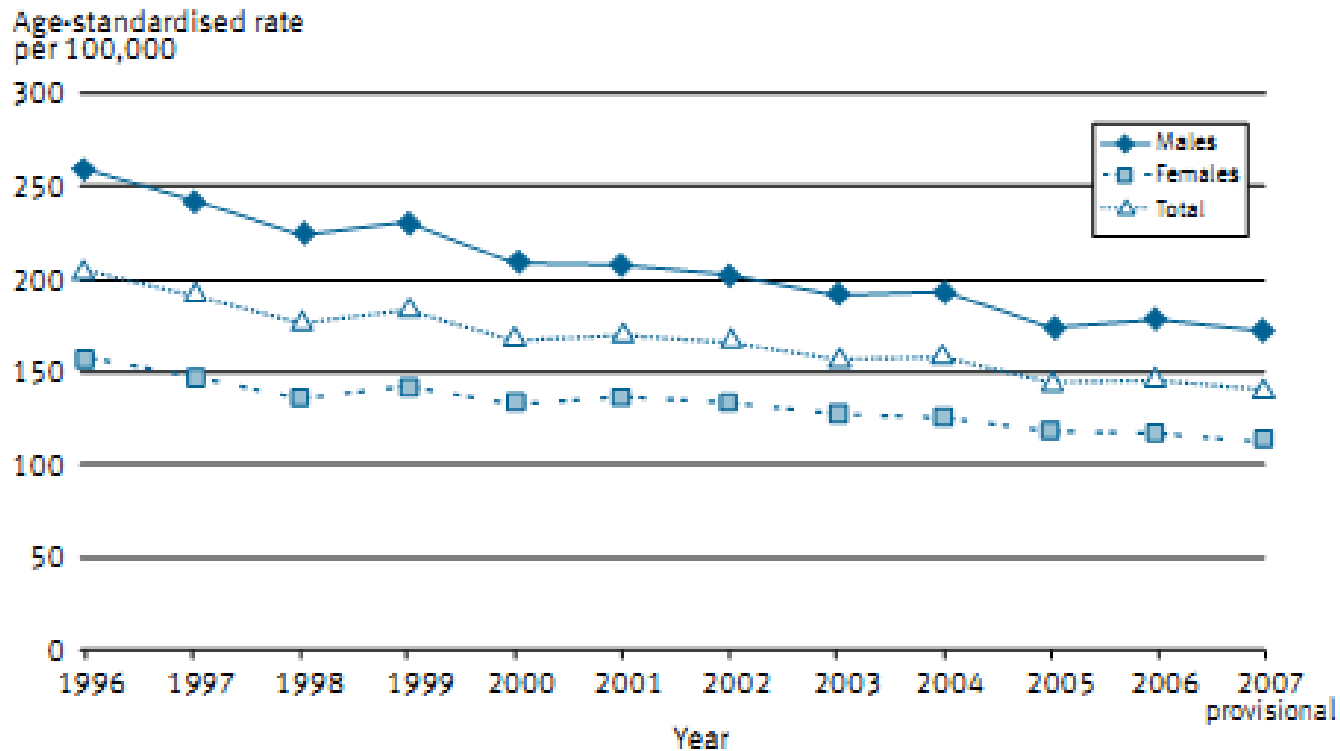
# Five year cancer survival rates, by major site, 1997/8 - 2005/6



Source: New Zealand Health Information Service data, 2007

Note: Trends were estimated by examining survival for patients diagnosed in successive two-year intervals by using the period analysis approach.

# Cardiovascular mortality trends 1996-2007



Source: Analytical Services, Ministry of Health, 2010

Note: Rates per 100,000 are age standardised to the WHO standard population.

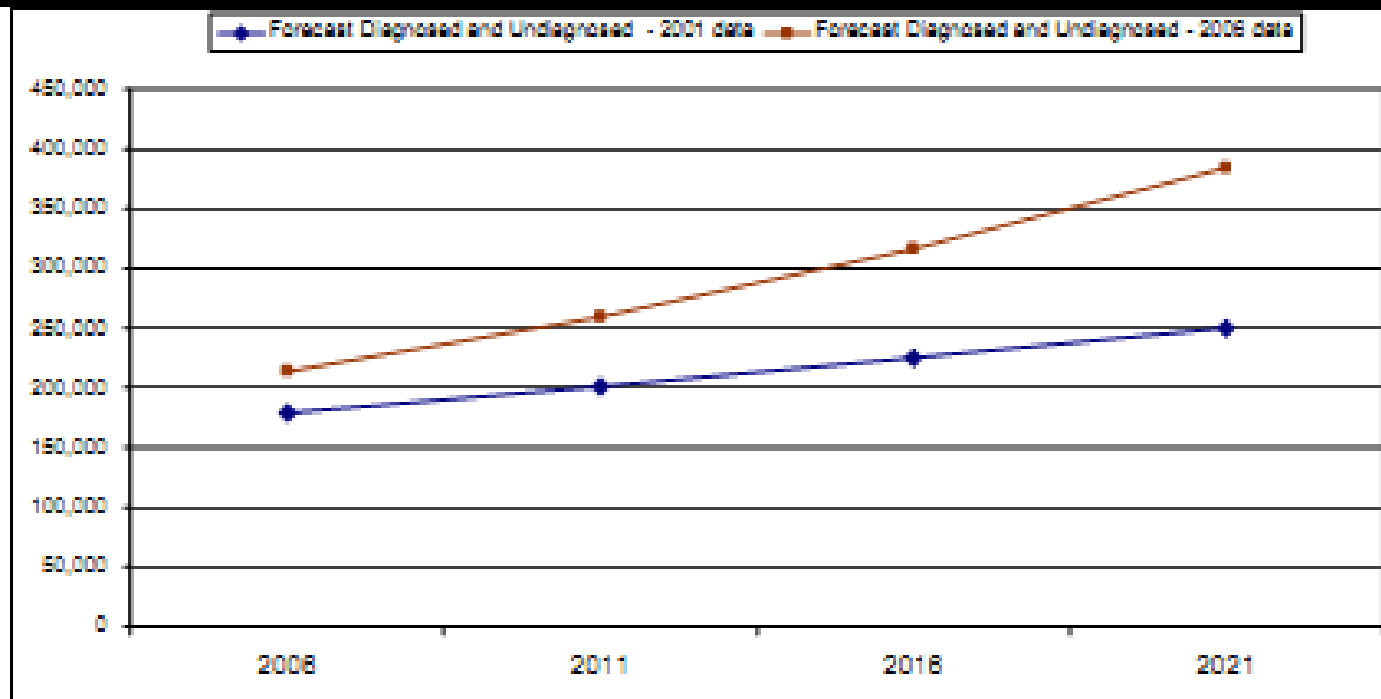
# Diagnosed Ischaemic Heart Disease by ethnic group

Ethnic group	Prevalence (95% CI)	Number of adults
European/ Other	5.5 (5.0–6.0)	140400
Māori	4.7 (3.8–5.5)	16700
Pacific	2.9 (1.8–4.0)	4800
Asian	2.3 (1.1–3.4)	6400

Source: 2006/07 New Zealand Health Survey

Note: Total response standard output for ethnic groups has been used.

# Type 2 Diabetes – Projections to 2021



*Source: Ministry of Health 2001 – 2021 Prevalence Projections and Ministry of Health 2006 Updated Prevalence Projections.*

*Key Assumptions: 4% p.a. growth in the number of people with Type 2 Diabetes; 2:1 diagnosed to undiagnosed ratio.*

# Healthcare Performance

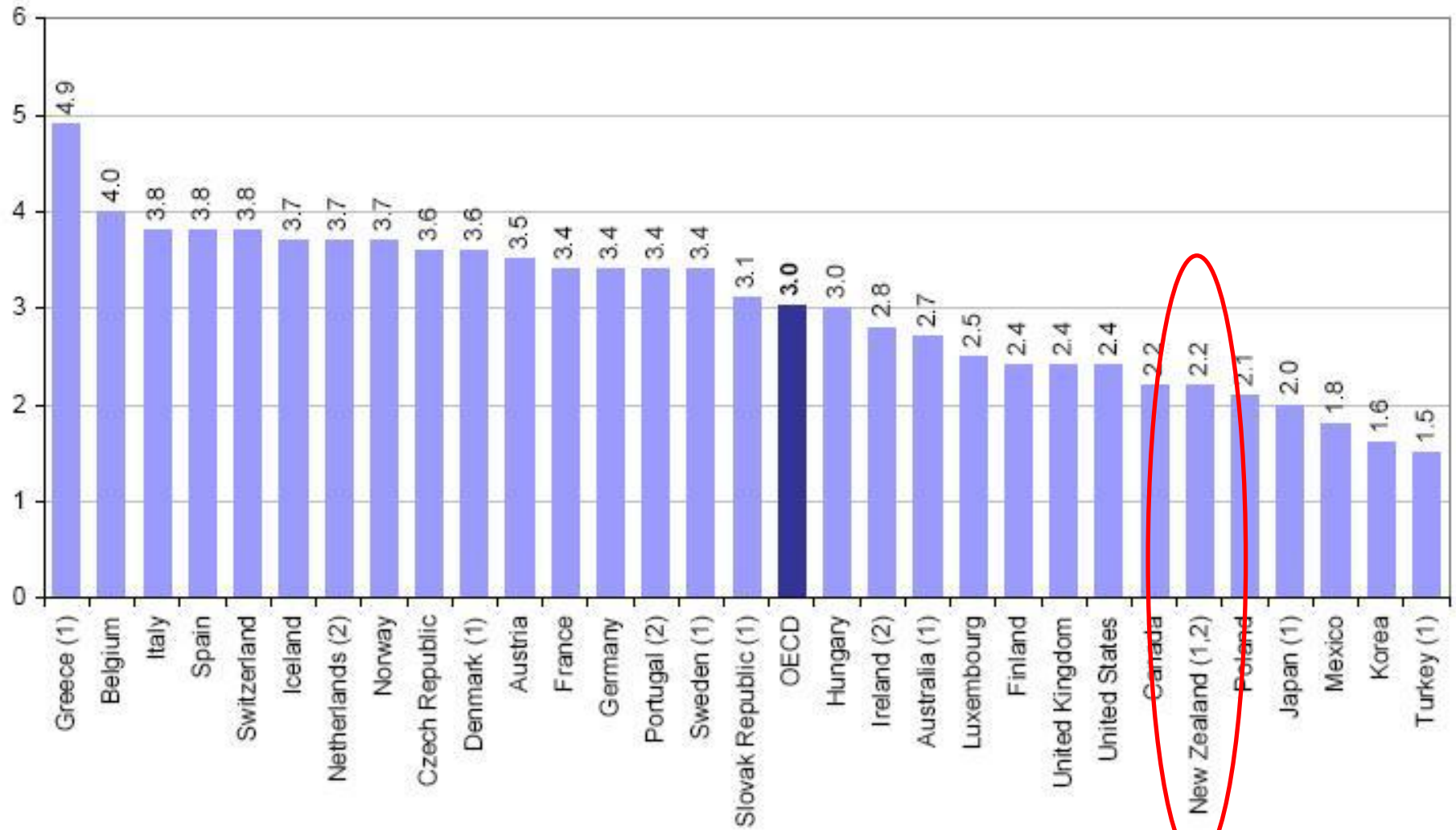
Country Rankings	
	1.00-2.33
	2.34-4.66
	4.67-7.00



	AUS	CAN	GER	NETH	NZ	UK	US
<b>OVERALL RANKING (2010)</b>	3	6	4	1	5	2	7
<b>Quality Care</b>	4	7	5	2	1	3	6
Effective Care	2	7	6	3	5	1	4
Safe Care	6	5	3	1	4	2	7
Coordinated Care	4	5	7	2	1	3	6
Patient-Centered Care	2	5	3	6	1	7	4
<b>Access</b>	6.5	5	3	1	4	2	6.5
Cost-Related Problem	6	3.5	3.5	2	5	1	7
Timeliness of Care	6	7	2	1	3	4	5
<b>Efficiency</b>	2	6	5	3	4	1	7
<b>Equity</b>	4	5	3	1	6	2	7
<b>Long, Healthy, Productive Lives</b>	1	2	3	4	5	6	7
<b>Health Expenditures/Capita, 2007</b>	\$3,357	\$3,895	\$3,588	\$3,837*	\$2,454	\$2,992	\$7,290

## Practising physicians per 1000 population, OECD countries, 2005

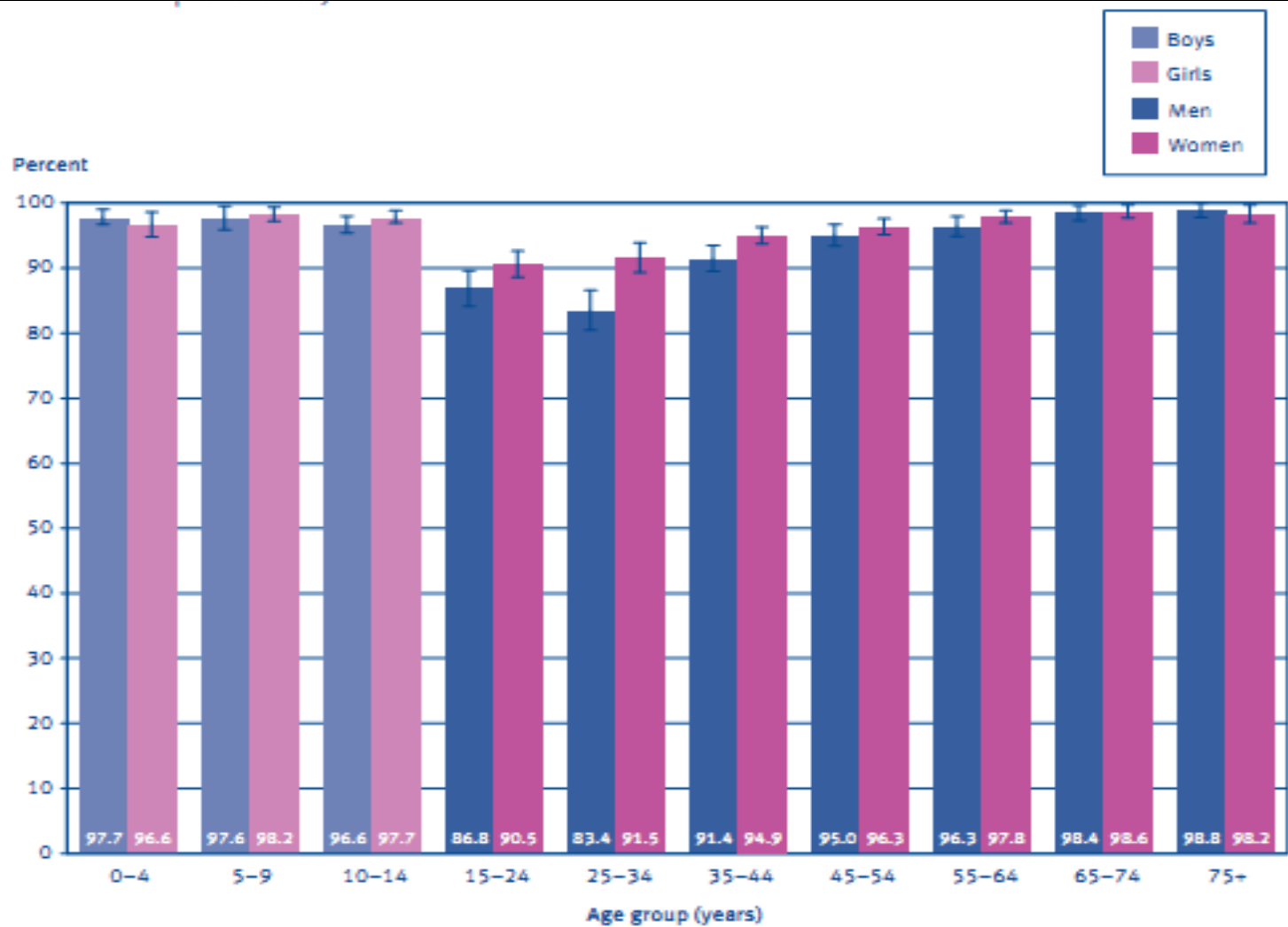
Per 1 000 population



(1) 2004. (2) Ireland, the Netherlands, New Zealand and Portugal provide the number of all physicians entitled to practise rather than only those practising.

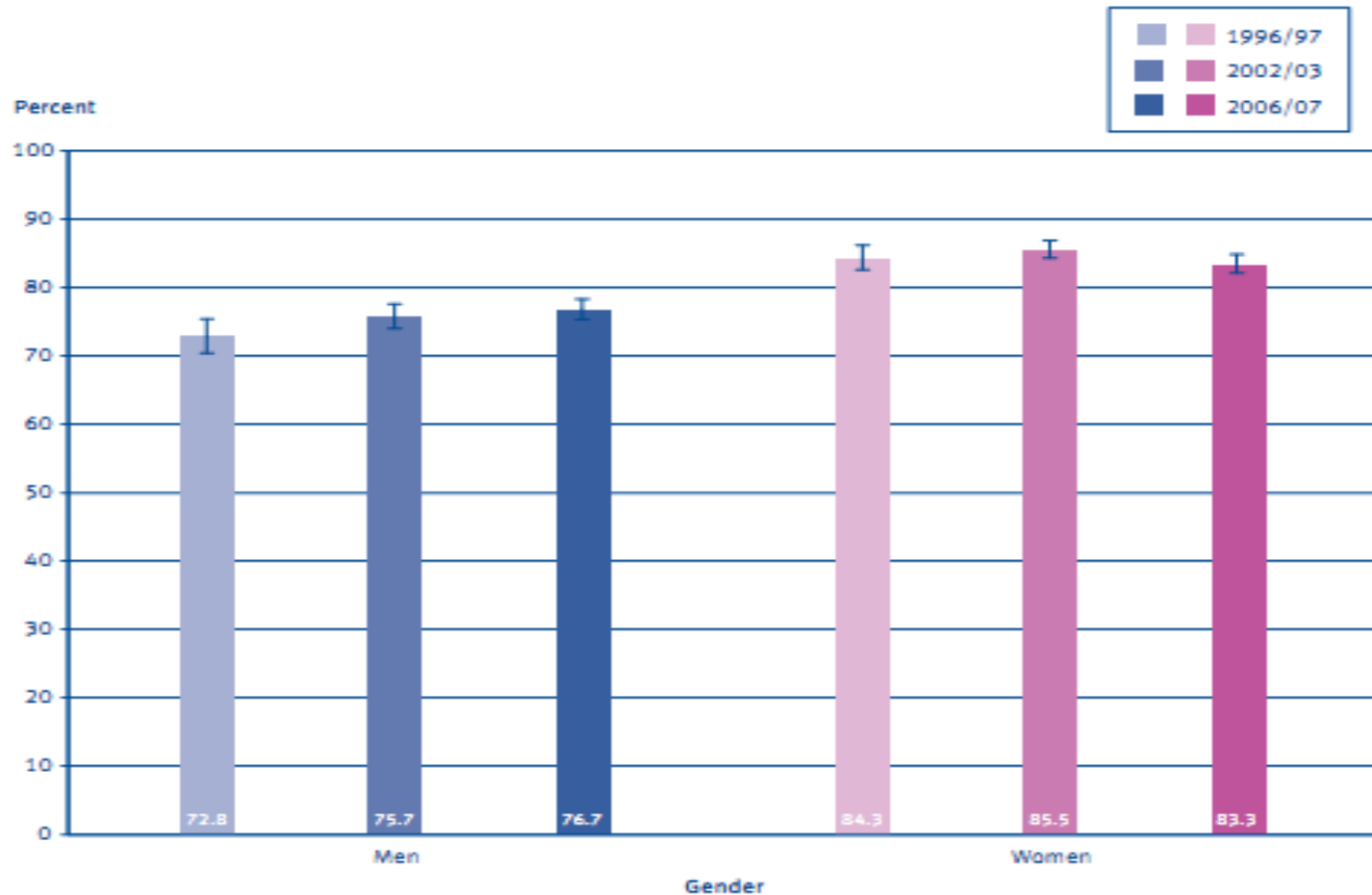
Source: OECD Health Data 2007.

# Primary care provider



Source: 2006/07 New Zealand Health Survey

# Saw GP in past 12 months – 1996/-2006/7, by sex



Source: 1996/97, 2002/03 and 2006/07 New Zealand Health Surveys

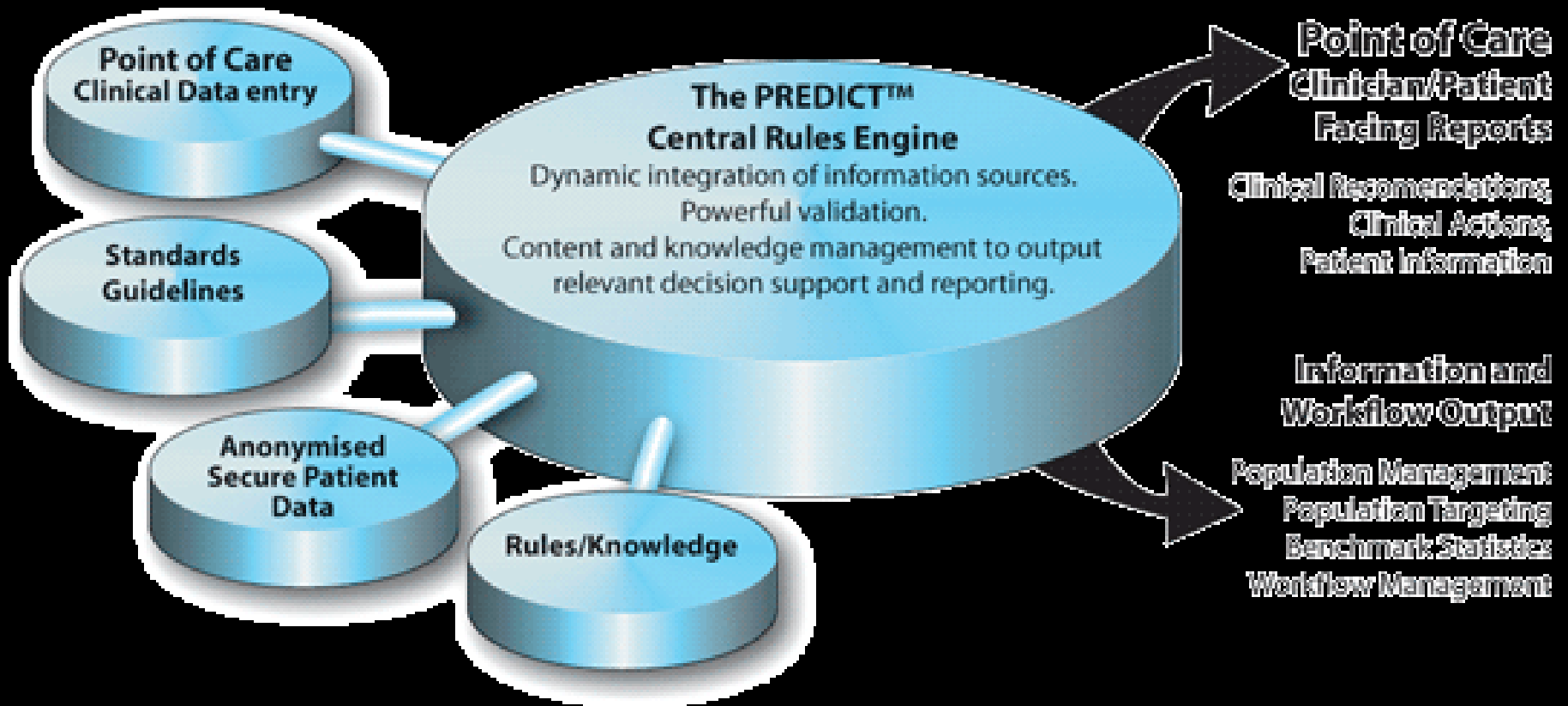
Note: Data from previous years have been reanalysed to allow for comparability.

# PREDICT

## Input/Data Capture

## Processing/Decision Support

## Output



# Benefits of clinical trials

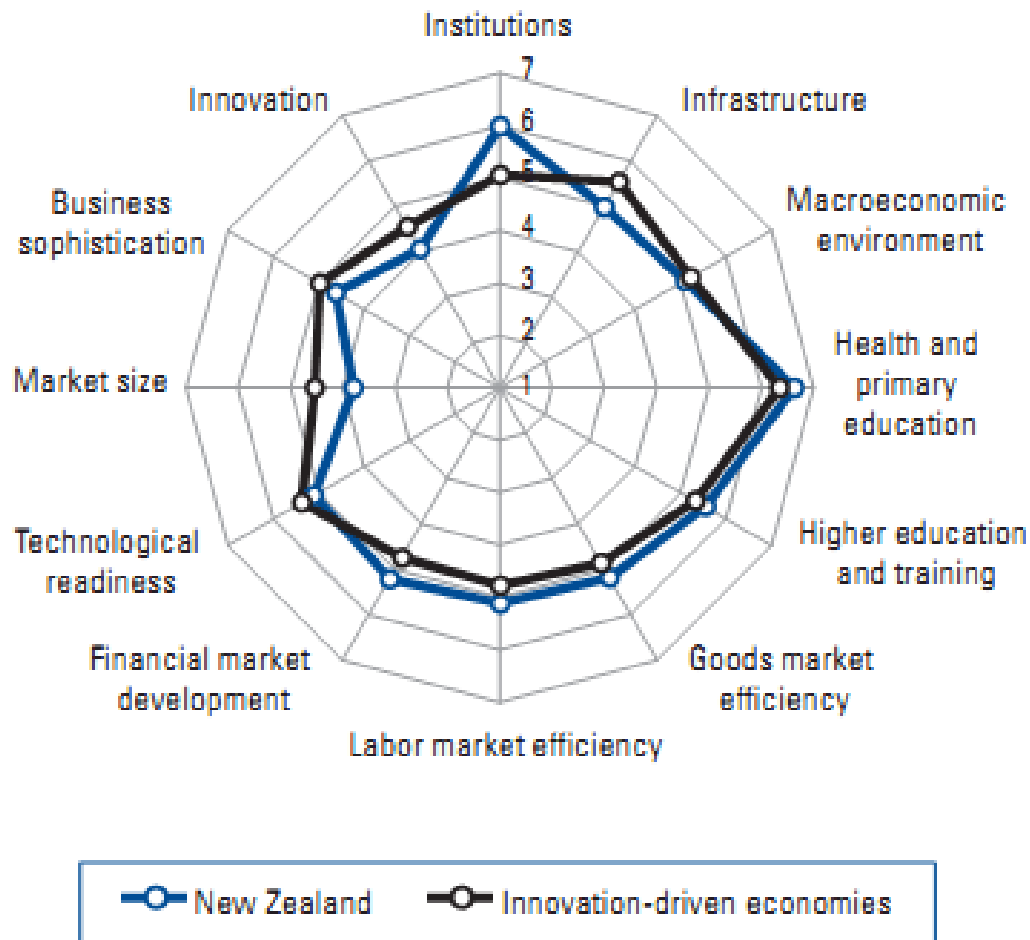
- Best evidence
- Cost-effective
- Return on investment
- Access to medications
- Healthcare providers exposed to latest evidence for effective treatments
- Research based clinical setting attracts high performing clinicians
- Quality and safety culture
- Local evidence for local population groups



# The Clinical Trials Landscape

- Few security issues; stable political system; non-litigious healthcare environment
- Highly connected healthcare system
- Distance and proximity
- Unique ethnic mix
- Naïve for many medications
- Influential researchers ; world-class track record with major trials; independent and unbiased clinical data
- Public participation
- Ethics and regulatory processes
- Facilities - 17/142 for quality of scientific institutions

# Global Competitiveness





ONE RING  
TO RULE THEM ALL



# Contact details:

A/Prof Chris Bullen

Clinical Trials Research Unit

School of Population Health

The University of Auckland

Email [c.bullen@ctr.u.auckland.ac.nz](mailto:c.bullen@ctr.u.auckland.ac.nz)

Mob 006421415267

